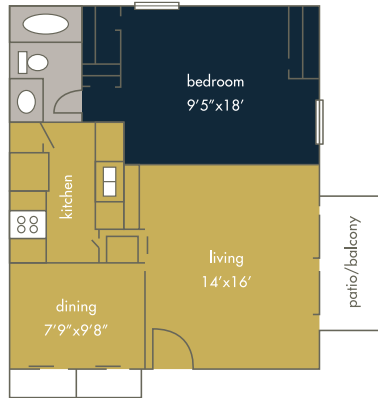
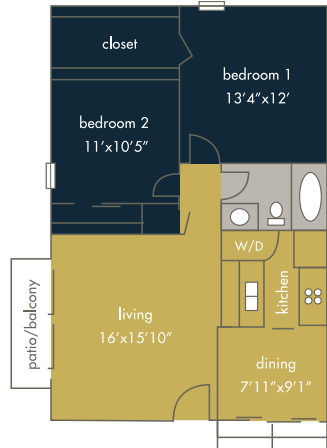


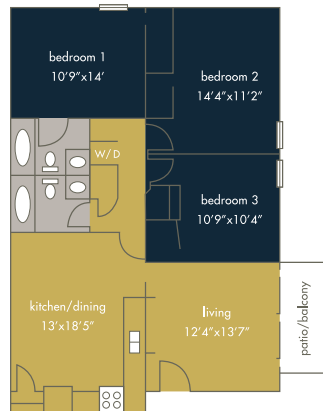
FLOORPLANS



1 bd, 1 bath / **690 Sq. Ft** rent — deposit —



2 bd, 1 bath / **882 Sq. Ft** rent — deposit —



3 bd, 2 bath / **1120 Sq. Ft** rent — deposit —

ACG is a San Antonio 501(c)(3) non-profit affordable housing provider whose mission is to develop, acquire, own and manage leased affordable housing in a community environment that promotes resident education, self-sufficiency, leadership and volunteerism through successful partnerships. ACG is a chartered member of NeighborWorks® America, a national network of more than 240 community development and affordable housing organizations.



- 1- Babcock North I & II 2 - Castleridge 3 - Springfield Manor
- 4 - Cimarron 5 - **Woodland Ridge** 6 - Thompson Place
- 7 - The Meadows at Bentley Drive 8 - Western Hills 9 - Cypress Cove



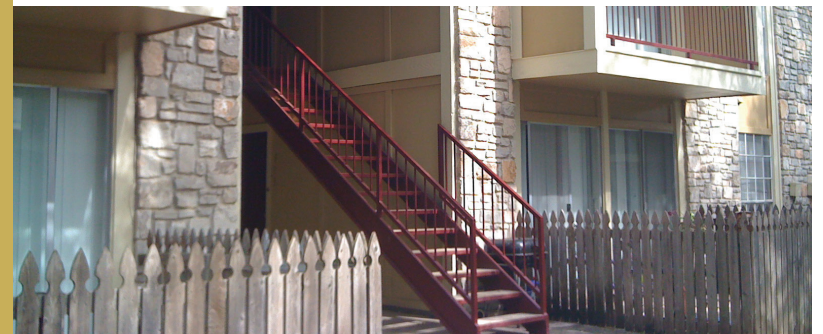
WOODLAND RIDGE APARTMENTS

7026 Wurzbach Rd., San Antonio, TX 78240

p. 210.614.2505



WOODLAND RIDGE APARTMENTS



ALAMOCOMMUNITYGROUP.ORG



YOUR FRIENDLY NEIGHBOR



COMMUNITY APPEAL



Empowering People.
Building Communities.

AMENITIES

ABOUT

Woodland Ridge is proudly owned by a local non-profit organization, known as Alamo Community Group (ACG). While ACG has been providing quality affordable housing since 1990 it has also been empowering community members by facilitating educational and community building programs through its on-site Community Learning Centers. These programs and services allow residents the opportunity to take advantage of educational and asset building activities without the barriers of time and transportation.

“ACG has done a wonderful job making me feel welcome. There are plenty of activities for the children and adults.”

~ KRISTEN WILBURN

SEE FOR YOURSELF!

alamocommunitygroup.org/woodland

OR STOP BY

7026 Wurzbach Rd., San Antonio, TX 78240

p. 210.614.2505

SPACIOUS 1, 2 & 3 BEDROOMS

- Community Learning Center with Computer Technology Lab
- Youth & adult educational programs
- Northside Independent School District
- All bills paid
- Cable-ready
- Clothes Care Center
- Playground and picnic areas
- Small pets welcome
- On VIA bus line
- Walking distance to the Medical Center

